



# **The University of International Business and Economics SIE International Summer Sessions**

---

2021 Winter



# *WHY US*

---

## *Experiencing Beijing*

---

Combining both modern and traditional architecture, Beijing is one of the oldest cities in the world, with a rich history dating back three millennia. It is the nation's cultural, educational, and political center. The international level of Beijing is very high. It is one of the world's leading centers for culture, diplomacy and politics, business and economics, education, language, and science and technology.

It is home to the headquarters of most of China's largest state-owned companies and houses the largest number of Fortune Global 500 companies in the world, as well as the world's four biggest financial institutions.





---

## *Our reputation*

---

The University of International Business and Economics (UIBE) is a first-tier public research university jointly-sponsored by the Ministry of Education and the Ministry of Commerce. It is one of the first batch of universities to be included in “Project 211” and “Double-First Class” initiative conceived by the Chinese government, and thus receives special support and endorsement from the Chinese government. UIBE Business School is the 5th institution in mainland China which has received all the highest-level accreditation of AACSB, EQUIS, and AMBA. UIBE is widely considered to be the leading Chinese university of economics, finance, international business, and foreign languages.

UIBE plays a leading role in the development of international alliance with universities around the world. Currently, UIBE has established partnerships with over 160 overseas universities and international organizations.

---

## *Our experience*

---

### *Academic activities*

Under the approval and supervision of UIBE Academic Division, the School of International Education (SIE) has operated UIBE SIE International Summer Sessions (ISS) since 2012. For the past 9 years, UIBE ISS has offered more than 250 courses; a total enrollment of more than 4500 students from over 300 universities around the world. Due to the popularity of summer session and the increasing demand of similar programs, we started to operate winter session in 2019. In both summer and winter sessions, the courses are offered entirely in English enjoyed by both domestic and international students. For UIBE students, the credits are counted into their degree program.

Apart from the academic activities, UIBE offers wide range of extracurricular activities including business tours and events.

### *Business tours*

Below are some of the business tours we organized:

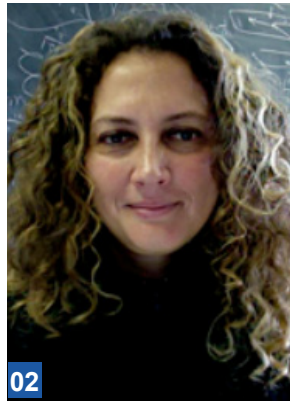
Time	Company Visited	Industry	Highlights
2021.1	DELL	An American multinational computer technology company	Lecture from Manager of innovation and development
2020.9	Huawei Cloud Core Network Department	A leading global provider of information and communications technology (ICT) infrastructure and smart devices	Fulltime-Employee & Fall Interns Recruiting Info Session
2020.1	Great Wall Securities	A leading Chinese Securities	Company visit; Lectures from Yi Wang (Chief Strategist)
2019.11	Boss ZhiPin	A leading Chinese employment agency	Winter-interns Recruiting Info Session

---

## *Our Faculty*

---

All the professors are from UIBE or other prestigious school in Beijing and abroad.



### **01** Dorothy Verkerk

University of North Carolina at Chapel Hill

I trust students learned a lot about the history of western culture, but I also learned a lot by questioning assumptions about western world views.

### **02** Sema Salur

University of Rochester

They come from many different kinds of universities and colleges so the classroom is always full of vigor.

### **03** Fuxi Wang

University of International Business and Economics

It's wonderful to see students enter as strangers and exit as friends. I am always amazed by how self-motivated and dedicated my summer program students are.

# *Introduction to SIE ISS*

## *2021 Winter*

---

### *Basic Information*

---

Duration: December 13, 2021-January 5, 2022

Location: On-campus and online

Students: Open to all international students

Class capacity: Maximum 60 students, 30-40 students on average

Teaching assistant: provided

Language: all the courses are taught in English

Minimum course register: 1

Maximum course register: 3

Credits for each course: 4

Closing date: December 6, 2021

### *How to apply*

---

1. Fill out the application form with your signature and send it to: [iss@uibe.edu.cn](mailto:iss@uibe.edu.cn)
2. Follow the instructions to submit the relevant documents.
3. The school will evaluate your application in 2 business days.
4. You will receive an admission letter/a rejection letter within 5 business days.
5. Pay the tuition and confirm your enrollment.

---

## *Courses*

---

### *Course list*

The courses listed are open to discussion. Adding more courses is possible if our partner schools or students are in need. Please see appendix for the tentative course list.

### *Course Format*

Lecture: 2 hours per day (from Monday to Thursday), 10 hours per week, 40 hours in total.

Discussion/Review Session: 2 hours each week; led by professors.

### *Workload*

For each lecture hour, 3-3.5 hours of workload are required, meaning that the students need to spend 3-3.5 hours after each lecture hour to do student-centered activities (homework, discussion, case study etc.)

### *Extra-curriculum activities*

Business Tours

House Party

Pub Quiz

Farewell Party

---

## *Student support*

---

### *Accommodation*

- Limited on-campus accommodation
- Twin room (2 students share)
- Public Laundry

### *Health care*

- Short-term medical insurance covers the whole program
- School Infirmary

### *Facilities*

- Cafeteria
- Gym

### *Tuition*

1 Course	2 Courses	3 Courses
¥23,910	¥30,310	¥35,310

### *Accommodation*

On Campus Housing	Off Campus Housing
¥6,380	¥5,220

## Appendix Course list

### *University of International Business and Economics* *SIE International Summer Sessions* *2021 Winter Course List*

No./课号	课程名称	Course	in person 线下	online 线上
ENG 263	中国商务文化	Chinese Business Language and Culture	√	√
PHI 110	哲学概论	Introduction to Philosophy	√	√
ENG 286	中英商务翻译	English/Chinese Business Translation	√	√
BDT 401	数据库分析	Database Analysis	√	√
ACC 419	银行理论与实务	Banking Theory and Practice	√	√
IFI 212	国际金融学	International Finance	√	√
JAP 107	基础日语	Elementary Japanese	√	√
HRM 303	国际人力资源管理	International Human Resource Management	√	√
MKT 310	国际市场营销	International Marketing	√	√
ECON 303	计量经济学	Econometrics	√	√
FIN 9403	风险管理和衍生品	Risk Management and Derivatives(Postgraduate)	√	√
ITR 320	国际商务	International Business	√	√
MGT 9302	组织行为学	Organizational Behavior(Postgraduate)	√	√
FIN 9210	金融概论	Corporate Finance(Postgraduate)	√	√
MGT 421	商业伦理	Business Ethics	√	√
ART 120	西方艺术导论从文艺复兴到现代	Introduction to Western Art from Renaissance to Modern	√	√
SEC 9432	投资组合管理	Portfolio Management(Postgraduate)	√	