



**NUS**  
National University of Singapore  
Students' Union

# **Freshmen 101 Guide**

NUSMods

**Proudly brought to you by the:**  
**42<sup>nd</sup> National University of Singapore Students' Union**  
**Executive Committee**

Freshmen Orientation Central Committee



# NATIONAL UNIVERSITY OF SINGAPORE STUDENTS' UNION

NUSU Secretariat, Yusof Ishak House, 31 Lower Kent Ridge Road, #05-01, Singapore 119078

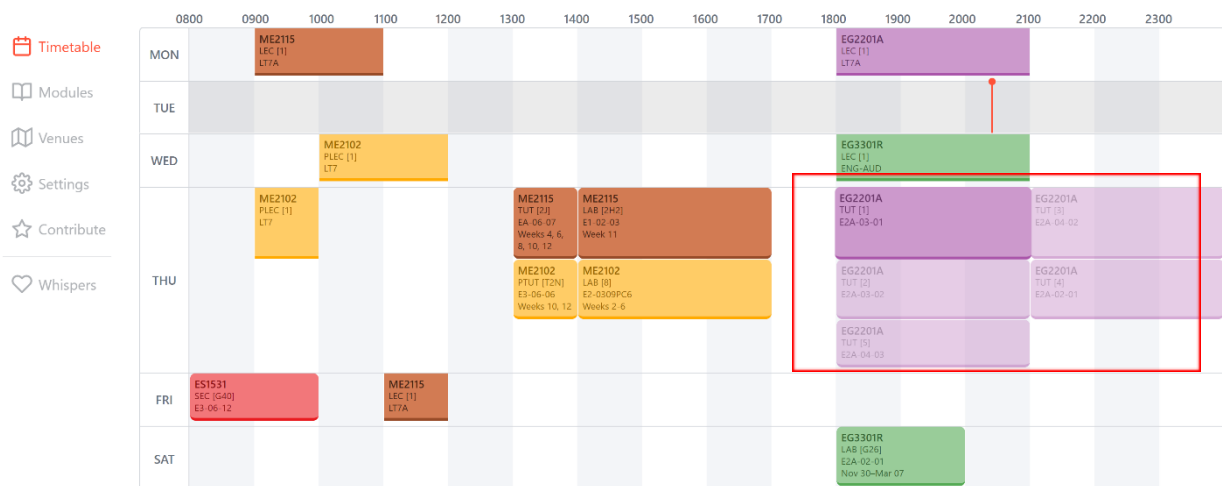
Phone: 6601 1345 | Website: [www.nussu.org.sg](http://www.nussu.org.sg) | Email: [feedback@nussu.org.sg](mailto:feedback@nussu.org.sg)

## Introduction

[NUSMods](#) is a one-stop platform made for students by students. It helps to seamlessly plan their timetable and learn about the different modules offered in NUS. Besides timetable planning, NUSMods also serves as a complete knowledge bank of NUS modules by providing useful module-related information such as community-driven module reviews and discussions.

## Quick Guide

### Timetable



With an intuitive user interface, NUSMods allows you to effortlessly plan and build your timetable from scratch.

Important functionalities:

- Add a module to the timetable with a simple search or using various useful filters (see Modules below)
- By clicking on a certain timeslot (see picture above), other available timeslots are shown as well for students to plan easily.
- Once completed, you can download the timetable as an image (.png), PDF (.pdf), or iCalender File (.ics) to sync it to Google Calendar or Outlook.

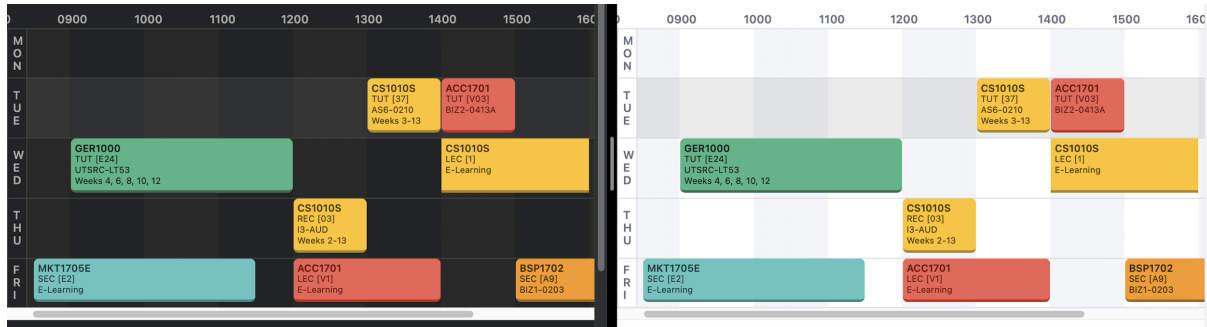


# NATIONAL UNIVERSITY OF SINGAPORE STUDENTS' UNION

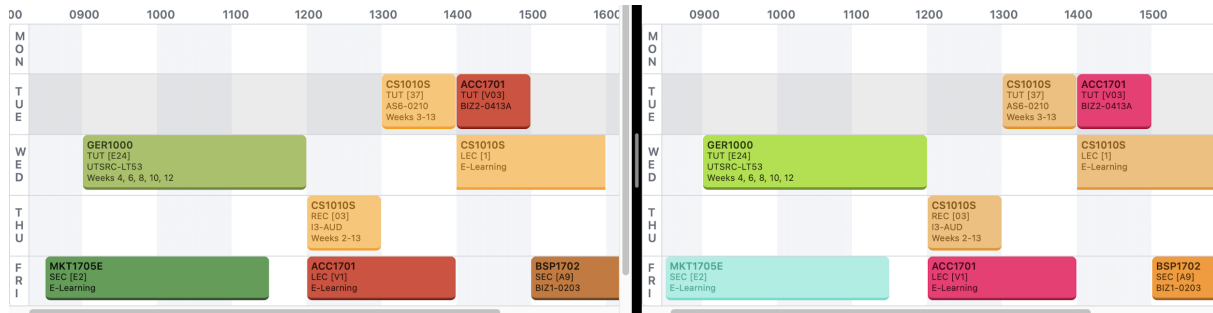
NUSSU Secretariat, Yusof Ishak House, 31 Lower Kent Ridge Road, #05-01, Singapore 119078

Phone: 6601 1345 | Website: [www.nussu.org.sg](http://www.nussu.org.sg) | Email: [feedback@nussu.org.sg](mailto:feedback@nussu.org.sg)

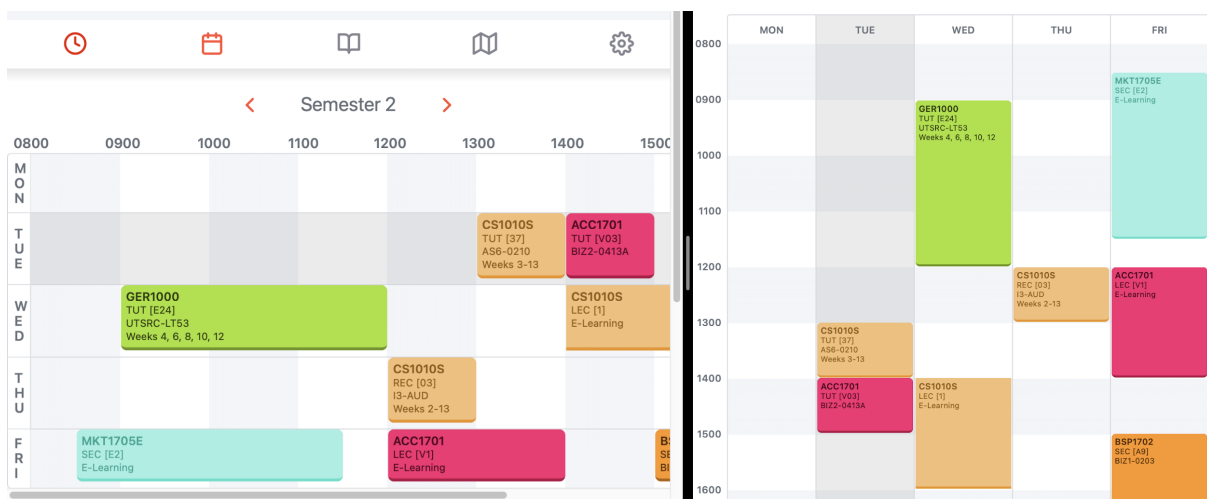
## Personalisation



Users can toggle between Dark and Light Mode by simply pressing the key 'X' on their keyboards.



Users can also switch up the colour schemes by toggling between the keys 'Z' and 'C' on their keyboards. There are a lot of variations to choose from!



Users can choose to view their timetables in Horizontal Mode or Vertical Mode by simply toggling on the 'Vertical Mode' or 'Horizontal Mode' button below their displayed timetable.



# NATIONAL UNIVERSITY OF SINGAPORE STUDENTS' UNION

NUSSU Secretariat, Yusof Ishak House, 31 Lower Kent Ridge Road, #05-01, Singapore 119078

Phone: 6601 1345 | Website: [www.nussu.org.sg](http://www.nussu.org.sg) | Email: [feedback@nussu.org.sg](mailto:feedback@nussu.org.sg)

## Modules

Timetable

Modules

Venues

Settings

Contribute

Whispers

Module code, names and descriptions

5866 modules found

ACC1002 Financial Accounting

Accounting • 4 MCs

The course provides an introduction to financial accounting. It examines accounting from an external user's perspective: an external user being an investor or a creditor. Such users would need to understand financial accounting in order to make investing or lending decisions. However, to attain a good understanding, it is also necessary to be familiar with how the information is derived. Therefore, students would learn how to prepare the reports or statements resulting from financial accounting and how to use them for decision-making.

**Preclusions**  
Students who have passed FNA1002 are not allowed to take ACC1002.

ACC1002X Financial Accounting

Sem 1 Sem 2 ST I ST II

Exam  
02-May-2020 1:00 PM • 1.5 hrs

Workload - 11 hrs

Lec Tut Project

Preparation

Refine by Clear Filters

**Offered In**  
☒ Semester 1 (3453)  
☒ Semester 2 (3702)  
☒ Special Term I (312)  
☒ Special Term II (272)

**Exams**  
☐ No Exam (4320)

**Level**  
☐ 1000 (621)  
☐ 2000 (873)  
☐ 3000 (1145)  
☐ 4000 (1143)  
☐ 5000 (1699)  
☐ 6000 (381)  
☐ 8000 (4)

**MCs**  
☐ 0-3 MC (526)  
☐ 4 MC (4018)  
☐ 5-8 MC (1152)  
☐ More than 8 MC (170)

**Faculty**  
Add faculties filter...

**Department**

Under 'Modules', browse through over 5000 modules offered in NUS and their details. Useful filters as seen on the right side of the image above, helps you to choose your desired modules more efficiently. Details regarding the modules' workload and final examinations are provided as well. Once done, you can add the module to your timetable.

Timetable

Modules

Venues

Settings

Contribute

Whispers

YX Kho • 2 months ago

[AY19/20, Sem 2]

Lecturer  
Tutorial: Dr Liu Yiqun

Format  
Lessons  
Weekly Online Lectures  
Alternate Week Tutorials

Assessments  
[Adjusted due to COVID-19]  
10%: Class Participation  
25%: Best 7 scores out of 10 LumiNUS Quizzes  
45%: Group Project: Comparing media report with primary research source; and evaluating the research; Zoom presentation  
20%: Final Exam – 14 MCQs on Exemplify

*The mathematical portion was actually manageable. Language used in the module felt counter-intuitive to me but got better upon repeatedly revisiting the quiz questions.*

^ | v • Reply • Share

LL • 5 months ago

Taken in AY19/20 Sem 1

Basically high school statistics, minus all the calculations and rigour.

Details

Prerequisites

Timetable

Reviews 27



# NATIONAL UNIVERSITY OF SINGAPORE STUDENTS' UNION

NUSSU Secretariat, Yusof Ishak House, 31 Lower Kent Ridge Road, #05-01, Singapore 119078

Phone: 6601 1345 | Website: [www.nussu.org.sg](http://www.nussu.org.sg) | Email: [feedback@nussu.org.sg](mailto:feedback@nussu.org.sg)

Under each module, you will also find reviews posted by past students. This will provide valuable insights to the module, allowing you to take a more informed decision. So, at the end of each semester don't forget to post your own module review to help future students taking that module under Contribute (see below).

## Venues

Timetable

Modules

Venues

Settings

Contribute

Whispers

E

ERC-SR9CAM

ERC-SR10

ERC-SR11

EW1-01-01

EW2-03-14

EW2-04-02

F

FED-01-02

Frontier

G

GBT-Lab

H

HSSMLCR

I

I3-0336

I3-0337

I3-0338

I3-0339

< FED-01-02

Frontier

GBT-Lab >

Frontier (Frontier) is on floor 1.



# NATIONAL UNIVERSITY OF SINGAPORE STUDENTS' UNION

NUSSU Secretariat, Yusof Ishak House, 31 Lower Kent Ridge Road, #05-01, Singapore 119078  
Phone: 6601 1345 | Website: [www.nussu.org.sg](http://www.nussu.org.sg) | Email: [feedback@nussu.org.sg](mailto:feedback@nussu.org.sg)

## Contribute



NUSMods is a 100% student-run, open source project. We rely on the continuous support of our contributors and the NUS student community. Many students have reported issues, suggested improvements, and even contributed code. Join us to make NUS a better place for its students and your friends!

## Help Us Help You!

Help your fellow students make better choices when module by leaving your honest opinions on modules you before.

## For Everyone



planning their  
have taken

## Write Module Reviews



## NATIONAL UNIVERSITY OF SINGAPORE STUDENTS' UNION

NUSSU Secretariat, Yusof Ishak House, 31 Lower Kent Ridge Road, #05-01, Singapore 119078  
Phone: 6601 1345 | Website: [www.nussu.org.sg](http://www.nussu.org.sg) | Email: [feedback@nussu.org.sg](mailto:feedback@nussu.org.sg)

### Further Information

NUSMods is made for students by students. The 3-person NUSMods team is looking for contributors!

Any skill (or lack thereof) will help, really. NUSMods has a huge potential for improvement and growth on multiple fronts. Help steer NUSMods in a direction that will benefit you, your friends, and the entire NUS community. NUSMods is doing this for free, but it's a chance to put your mark on a real product that 30000+ people already depend on. You'll gain experience that most school projects won't give you.

Reach out to E-Liang at [eliang@nusmods.com](mailto:eliang@nusmods.com) and we'll figure something out.

For software developers, you can also browse our source code, open issues, and contribute at <https://github.com/nusmodifications/nusmods> as well as join our Telegram group at <https://t.me/nusmods>

Team NUSMods

*For more queries or clarifications, kindly write in to us through our communication platforms:*



[feedback@nussu.org.sg](mailto:feedback@nussu.org.sg)



[www.nussu.org.sg](http://www.nussu.org.sg)

