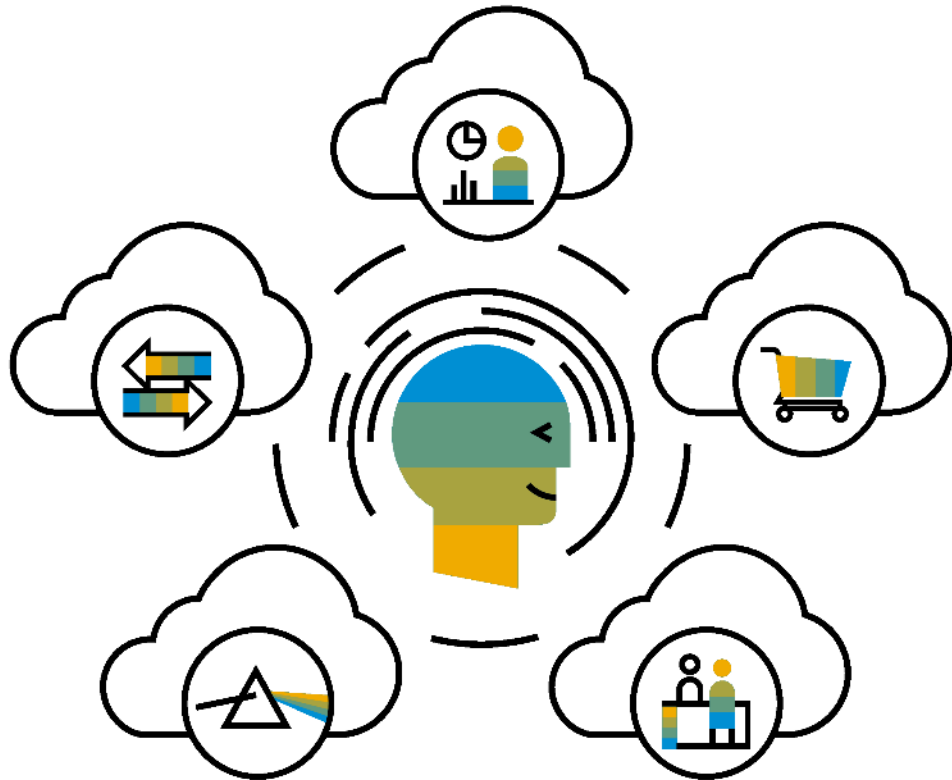


# SAP Ariba Network Fee Schedule Basics



**FREE** for all suppliers to join and begin transacting

---

Two components of the supplier fee schedule: Transaction Fees and Subscription Fees

---

Chargeable documents are considered Purchase Orders, Invoices, Service Entry Sheets, and Service Entry Sheet Responses

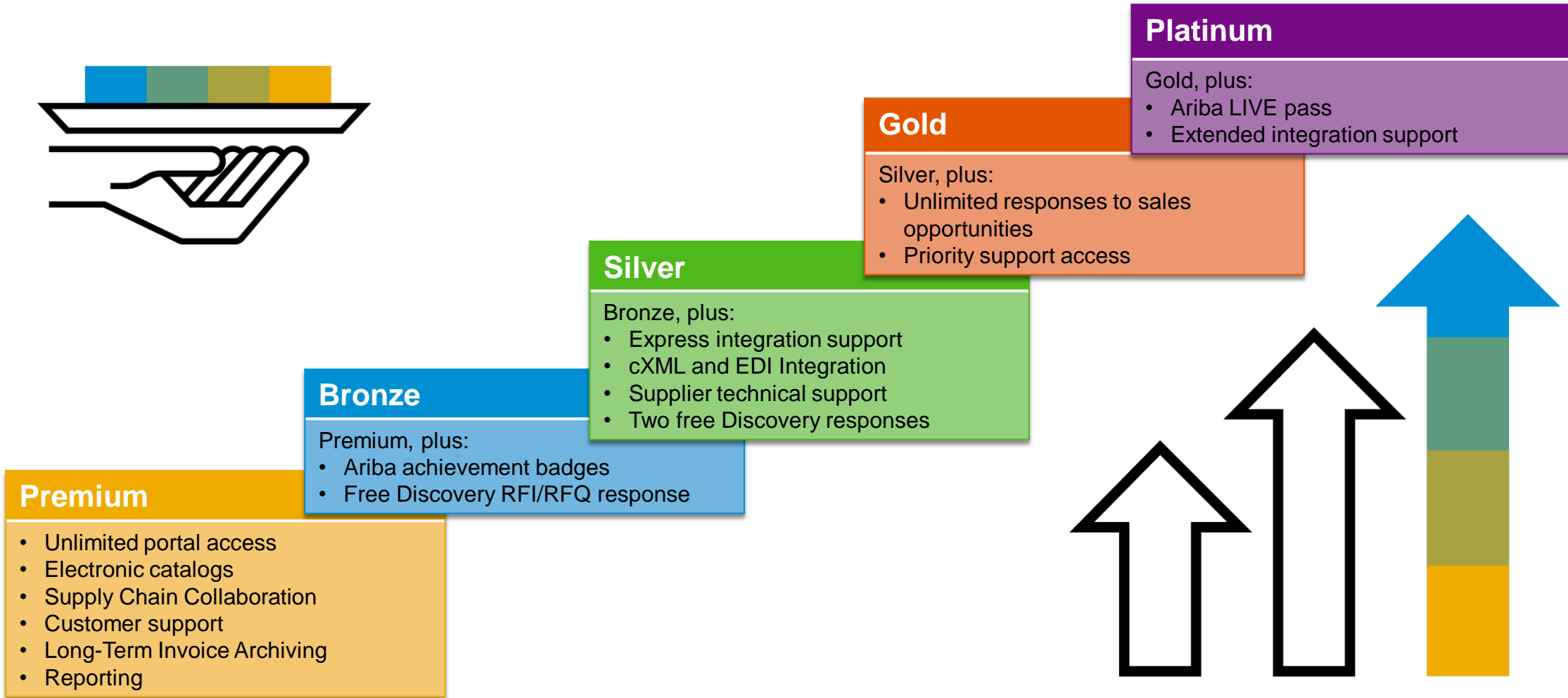
---

Chargeable suppliers transacting less than \$250,000 in annual financial volume will be assigned to the Bronze level irrespective of annual document count

---

**Note:** Fees are only applicable for suppliers who utilize **Enterprise** Accounts.  
**Standard** Accounts are free and not subject to the fees described in this workshop.

# Enterprise Account Subscription Levels



Read more about subscription levels, calculate your fees & check out other currencies on our website <https://www.ariba.com/ariba-network/ariba-network-for-suppliers>

# Ariba Network Supplier Fee Schedule for Enterprise Accounts - SGD

**Fee Threshold**  
**\$68,450 and 5 Documents**  
 Suppliers who do not cross the Fee Threshold will not be charged fees

## Transaction Fees

Billed every quarter  
 Per-relationship fee cap: \$27,375/year

**Without Service Entry Sheets**  
 0.155% of transaction volume

**With Service Entry Sheets**  
 0.35% of transaction volume



## Subscription Fees

Billed once a year

Annual Document Count Across <u>All</u> Customer Relationships	Subscription	Annual Fees
Up to 4 documents	Premium	<b>Free</b>
5 to 24 documents	*Bronze	\$70
25 to 99 documents	Silver	\$1,040
100 to 499 documents	Gold	\$3,125
500 and more documents	Platinum	\$7,600

**\*Chargeable suppliers transacting less than \$342,200 in annual financial volume will be assigned to the Bronze level irrespective of annual document count**

*\*Note: Invoices from SAP Ariba will be in USD currency*